

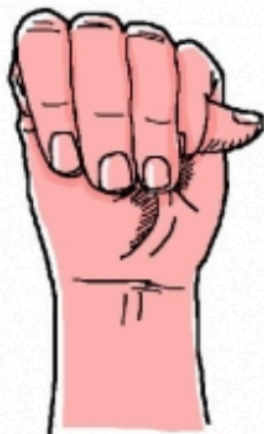
Date: 27 March 2018 1:56 pm

Topic: Signs

Marfan syndrome is featured with many typical hand characteristics. However a combination of two specific hands signs related to a long hand shape (hand signs) and hand motorics (joint hypermobility) is usually enough to identify the disorder.

The Steinberg sign

This test is used for the clinical evaluation of Marfan patients.



Fold your thumb into the closed fist. This test is positive if the thumb tip extends from palm of hand.

The Walker-Murdoch sign

This test is used for the evaluation of patients with Marfan syndrome.



Grip your wrist with your opposite hand. If thumb and fifth finger of the hand overlap with each other, this represents a positive Walker-Murdoch sign.

SCMP

- Marfan Syndrome Hand Test -

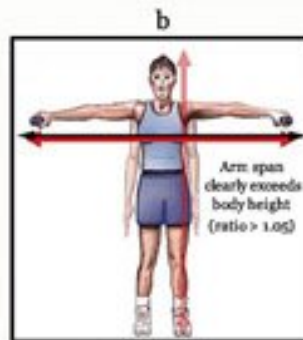
(Adults: 17 points or more required for positive testing; children: 18 points or more)

PICTURES

HAND SHAPE:



8 points



8 points

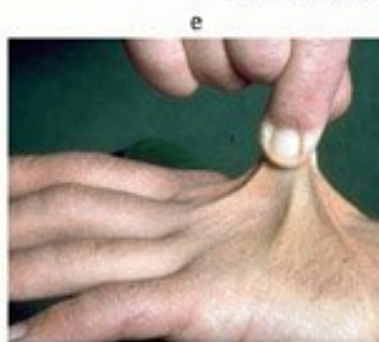


4 points



4 points

HAND SKIN QUALITY:



2 points



2 points

HAND MOTORICS:



1 point



1 point



1 point



1 point

